

## 105 SOUTH MACDILL AVENUE, TAMPA, FL



1,500 SF new construction class 'A' Medical Office space available to Lease. Prime location in the heart of South Tampa. Minutes from all the hospitals with build out allowances. Completion August 2015.

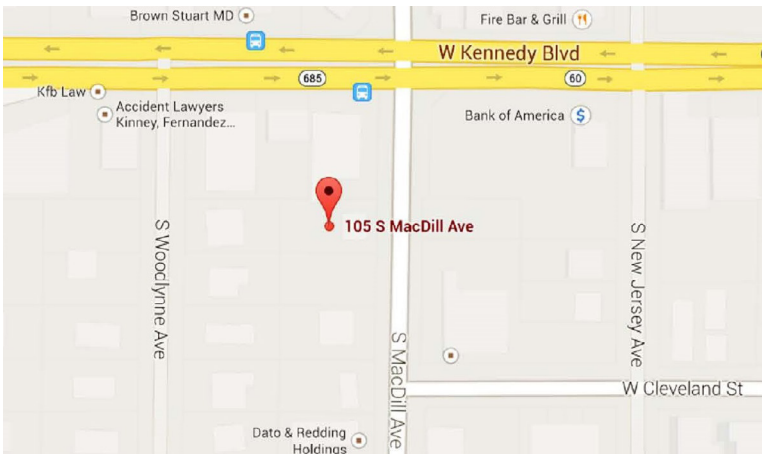
### BUILDING SPECIFICATIONS

Property ID	18644197
Property Type	Office
Lease/For Sale	Lease
Building, Sq. Ft.	7,789 SF
Year Built	2015
Acres	N/A



### PROPERTY HIGHLIGHTS

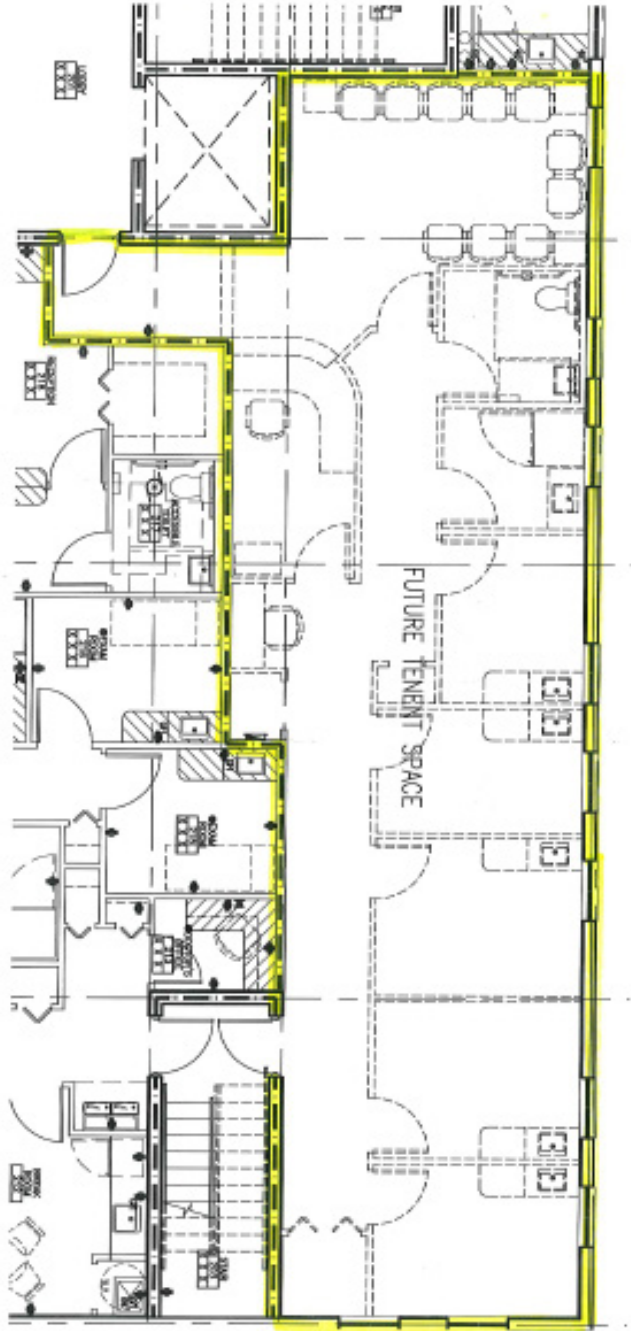
- 7,789 SF building with 1,500 +/- SF available
- Centrally located in the heart of South Tampa
- Class 'A' Medical Office space
- Minutes from all area Hospitals
- Build out allowances available
- \$28.00/SF Modified Gross



### ASSIGNED AGENTS

Frank Cisneros Jr.  
 Email: fcisneros@tampabay.rr.com  
 Office: (813) 885-5656  
 Cell: (813) 220-5566

# FLOORPLAN



NOTICE TO BROKERS AND PROSPECTIVE PURCHASERS/TENANTS: THE MATERIAL CONTAINED IN THIS OFFERING IS FURNISHED SOLELY FOR THE PURPOSE OF YOUR CONSIDERATION TO PURCHASE/LEASE THE PROPERTY CONTAINED HEREIN, AND IS NOT TO BE USED FOR ANY OTHER PURPOSE WITHOUT THE EXPRESS WRITTEN CONSENT OF THE KRAUSS ORGANIZATION OR THE OWNER. THE MATERIAL IS BASED ON INFORMATION OBTAINED BY OWNER AND ON INFORMATION OBTAINED BY THE KRAUSS ORGANIZATION FROM SOURCES THEY DEEM RELIABLE. THIS IS A SUMMARY OF PERTINENT FACTS ON THE PROPERTY AND IS NOT INTENDED TO CONTAIN ALL OF THE INFORMATION DESIRED BY A PR1 DOSPECTIVE PURCHASER/TENANT. PROSPECTIVE PURCHASERS/TENANTS SHOULD MAKE THEIR OWN INVESTIGATION AND CONCLUSIONS WITHOUT RELIANCE UPON THE MATERIAL CONTAINED HEREIN. NEITHER OWNER NOR THE KRAUSS ORGANIZATION, NOR ANY OF THEIR OFFICERS, EMPLOYEES OR AGENTS MAKE ANY REPRESENTATION OR WARRANTY EXPRESSED OR IMPLIED AS TO THE ACCURACY OR COMPLETENESS OF THIS OFFERING.