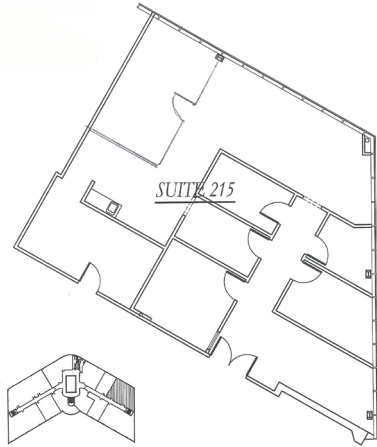


**5005 WEST LAUREL STREET, TAMPA, FL
 SUITE 215**



Full-service professional office building with free parking and convenient access to Tampa International Airport. Located in the heart of the Westshore Business District.

BUILDING SPECIFICATIONS

Property ID	14663150
Property Type	Office
Lease/For Sale	Lease
Building, Sq. Ft.	43,831 SF
Year Built	N/A
Suite Size	2,065 RSF
Rate	\$24.50 Full Service

PROPERTY HIGHLIGHTS

- Full-service professional office building
- Free parking
- Convenient access to Tampa International Airport
- Private entrances for 1st floor suites
- Located in the heart of the Westshore Business District
- Very competitive rates
- On-site cafe

ASSIGNED AGENTS

Bob Donnelly
 Email: rdonnelly@thekraussorg.com
 Office: (813) 885-5656
 Cell: (813) 758-2312

Larry Brown
 Email: lbrown@thekraussorg.com
 Office: (813) 885-5656
 Cell: (813) 787-9637

